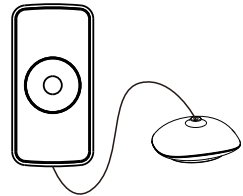


Smart Water Leakage Sensor User Manual

M414-14Ever1.0



*Please read the user manual carefully before operation.
The guide picture is for reference only, please in kind prevail.

Product Instruction

Smart water leakage sensor, adopts ZigBee wireless module. Super low power consumption circuit design, makes long battery lifespan. Separate design of body and sensor, efficiently prevent the influence resulted from high humidity. High precision and sensitivity, applicable for basement, machine room, hotel, water tower, pool, swimming pool, solar, kitchen, bathroom and other places may have water leakage or water overflow.

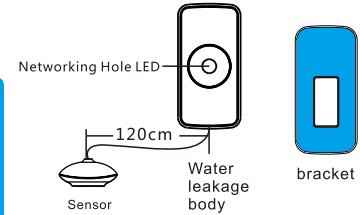
1

1. Working Voltage: DC3V (2*AAA Battery)
2. Static current: $\leq 5\mu A$
3. Alarm current: $\leq 30mA$
4. Networking: ZigBee Ad-hoc Networking
5. Wireless networking distance: $\geq 100m$ (in the open area)
6. Working environment: $-10^{\circ}C \sim +50^{\circ}C$
7. Working humidity: max 95%RH
8. Body dimension: 76 * 36.6 * 16.5 mm
9. Sensor dimension: 28.3 * 26.5 * 12.2mm

2

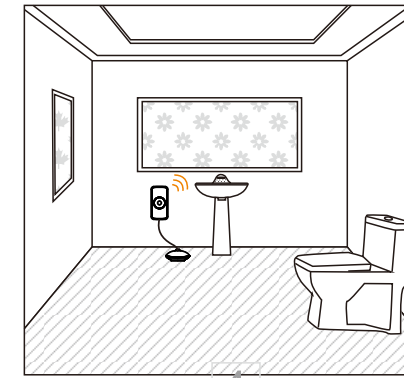
Specifications

Warm Prompt



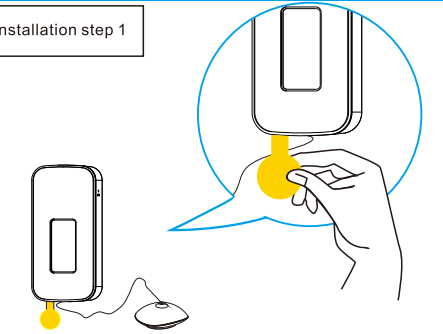
1. Install water leakage sensor at easy leakage area.
2. Don't install water leakage sensor at position of rainwater, lampblack, water vapor etc
3. Don't install water leakage sensor at water immersed position.

3



Effective Diagram

Installation step 1



- Remove battery insulation film to power on.

5

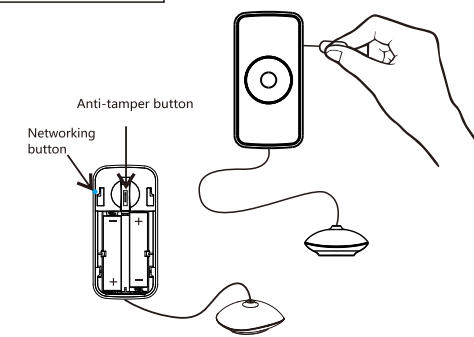
Installation step 2



- Click "Add Device" on the APP interface, and enter the networking mode.

6

Installation step 3



7

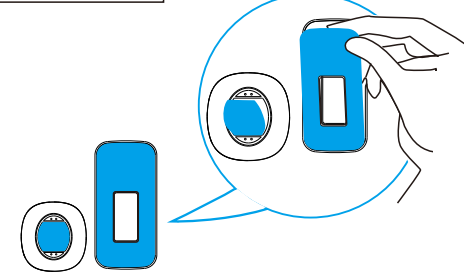
- Connecting network: According to APP prompt, press networking hole for 2 seconds till green LED flash quickly, APP shows slip, green LED keep on for 3 seconds, networking success.
- Disconnecting network: Press the networking button for 5 seconds to disconnect the network, after the green light flashes slowly for 3 seconds, which indicates network is disconnected success.

LED indicator instruction of devices

Add network	Pressing network button for 2 seconds, green LED flash (twice per second)
Quit network	Green LED flash six times (once per second)
Alarm	Red LED flash one time

8

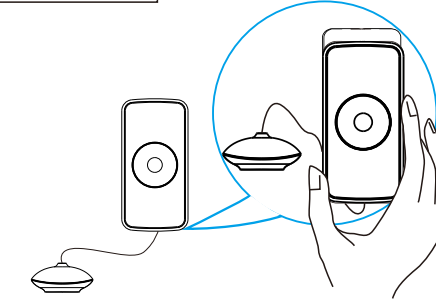
Installation step 4



- Tear off the gummed film, stick the equipment in the required area.

9

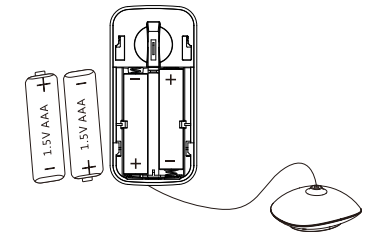
Installation step 5



- Insert water leakage body to bracket.

10

Battery Replacement



- Please replace battery correctly, following the battery positive and negative electrode. Attention to environmental protection and dispose used battery properly.

11